



THE GEOMETRY OF TILINGS

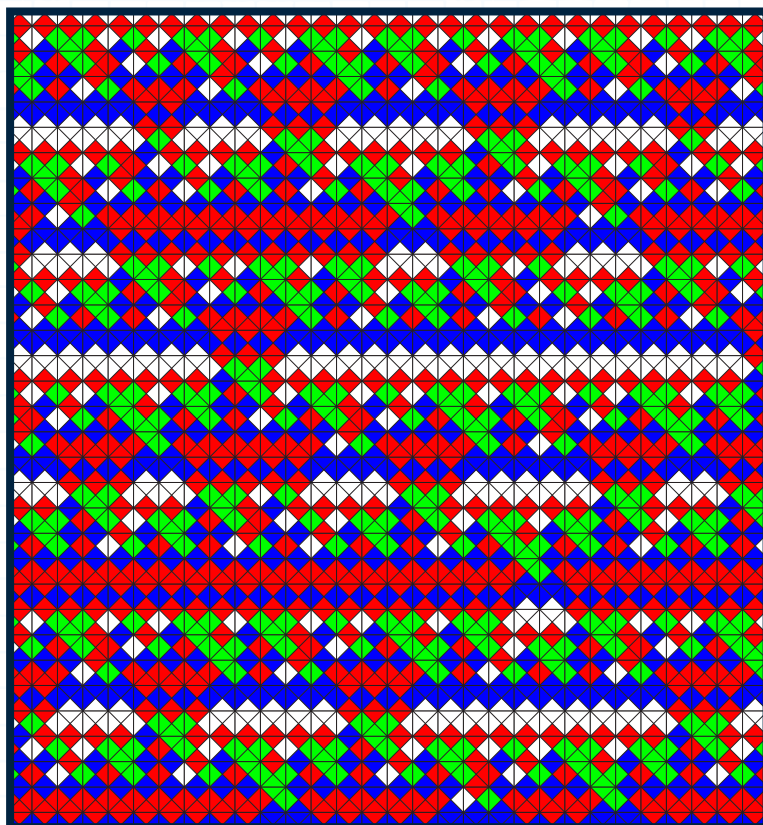
Professor Andrew Putman

University of Notre Dame

Thursday, February 2, 2017

5:00PM; 102 DeBartolo

Tilings of the plane are a classical subject with deep connections to computer science and geometry. Many of their features can be appreciated without any math background whatsoever —*not even calculus*—just a little common sense. We will survey old and new results in this area.



UNIVERSITY OF
NOTRE DAME

College of Science